



FIRST PRESBYTERIAN OF FULTON, MO

MATTHEW 25 CHURCH

Established 1875 - 718 Court Street, Fulton, Missouri - www.fpcfulton.org - 573-642-5541

Digital Newsletter Vol. 8, #25 - 6/12/26 through 6/18/26



**WE ARE A MATTHEW 25
CHURCH!**

Building Our Faith.... Through These Waters!

Worship & Reflection This Week!

WALKING WITH THE ANCESTORS

*A Summer Journey
Through Genesis!*

This summer, we will journey through the book of Genesis, traveling alongside Abraham and Sarah, Isaac and Rebekah, Jacob and Joseph. Through stories of faith, failure, promise, and grace, we will discover how God's covenant faithfulness shaped generations and continues to shape our lives today.

Livestream on YouTube: <https://www.youtube.com/@fpcfulton>

Sunday, June 14, 2026: The Eleventh Sunday in Ordinary Time

(Year A)

Liturgical Color: Green

Usher Captain: Graham McCaulley

Acolyte: Willam Russell

Greeter: Whitney McCaulley

Live Stream/Sound: Shaun Spears & Tim Wilkerson

Slide Management: Shirley Dixon

Liturgist: Dawn Yancey

Worship Leader: Rev. Carol Pierson

First Scripture Reading: Psalm 116:1-2, 12-19

Second Scripture Reading: Genesis 18:1-15 & 21:1-7

From the Hymnal This Week

Hymn of Praise--#625 "How Great Thou Art"

Hymn of Petition--#451 "Open My Eyes, That I May See"

Hymn of Response--#305 "Come Sing, O Church in Joy"

Hymn of Sending--#748 "Go with Us Lord"

~~~~~

**Additional Readings for The Tenth Sunday in Ordinary Time (Year A)**

Psalm - Psalm 116:1-2, 12-19

Gospel: Matthew 9:35-10:8 (9-23)



**FIRST PRESBYTERIAN  
OF FULTON, MO**

# First Presbyterian Church

Rev. Carol Pierson, Pastor

Located at 718 Court Street in historic downtown Fulton, Missouri

## Sunday Worship Service

10:30 am

Adult & Children's Sunday School  
is on Summer Break through the  
2nd Sunday in August!

Watch this Space for our  
Summer Reading & Activity  
Suggestions!



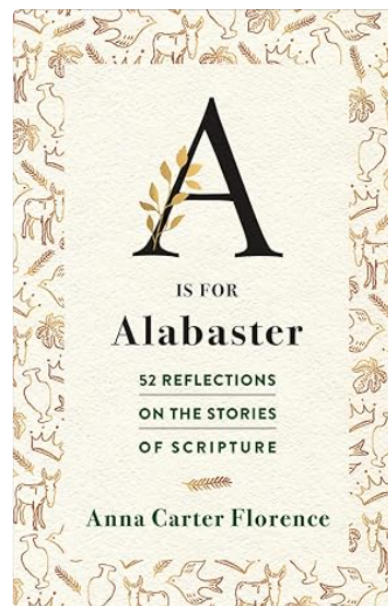
## Wednesday Morning Bible Study Reconvenes on July 8th!

The Wednesday Morning Bible Study Group will reconvene on Wednesday, July 8, at 11 am. They will be reading and considering the Anna Carter Florence book, "A is for Alabaster: 52 Reflections on the Story of Scripture." To order a copy of the book, please contact Pastor Carol.

~~~~~

"Every time people tell me they have decided to read the Bible straight through I put them on my prayer list, pretty sure their galoshes will fill with sand before they get halfway through the book of Joshua. Here, at last, is a better idea: enter the Bible through any of the fifty-two doors in this new abecedarly by Anna Carter Florence, who will show you how much there is to gain from starting small and staying put with a few verses for a while. Whether her topic is an ax, a yak, or the queen of Sheba, she can sound as surprised as her reader to find how much is left to discover in a book we thought we already knew."

—Barbara Brown Taylor



Women of Faith Group Meets Every 2nd Saturday!



Take a short break from Saturday morning chores to be with friends. This newly-formed group especially for women will gather in the church library at 10:00 a.m. on the second Saturday of each month to enjoy an hour of fellowship, Bible study, and discussion of outreach projects.

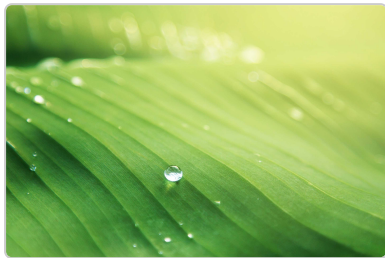
Special Note:

We will meet at 10:00 a.m. on June 13 with a study of Mary. Snacks will be provided; please bring your own beverage. Contact Mary Powers (314-277-5440) with questions

ATTENTION FPC CONGREGATION: The Worship Committee Needs Your Input!

Last Few Days to Register Your Preference!

The Worship Committee is seeking to determine which method of Communion service is most desired by the Congregation. Please help by answer this brief survey by June 15, 2026.



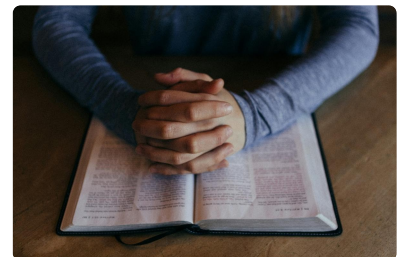
First Presbyterian Church Worship Committee Survey! Please answer by June 15, 2026.

Take this survey powered by [surveymonkey.com](https://www.surveymonkey.com). Create your own surveys for free.

[🔗 surveymonkey.com](https://www.surveymonkey.com)

June MUP Prayer Circle

*Lord of All Creation,
Thank you for choosing us, for your blessings, your love and grace. We come before you once again seeking your guidance, power and action. We place our hope in you. We are bearing witness to the salvation you offer in Christ, to the power of your Spirit that you have sent to dwell with us. We are working together to become more and more faithful to you each day. We need you to lift up leadership within our congregations, in our presbytery and in our denomination to fill our need for pastoral care, vision casting, preaching that is prophetic, and the mirroring of your love into all our communities. We know you have plans for filling our pulpits, for bringing hope and new vision to our congregations as we navigate the great changes in our world. Thank you for loving us so much. Amen*



NEOLA/MUP

SUMMER CAMP 2026

Camps @ Camp Jo-Ota
All grades are for grade completed

- Try It Camp **Pre-K - 1st**
 - June 5-7 \$240/pair
 - Adult or Parent must come with Child
- Elementary Camp **2nd-3rd**
 - July 7-9 \$200
- Junior Camp **4th-5th**
 - July 7-11 \$350
- Chi Rho Camp **6th-8th**
 - July 20-25 \$390
- CYF Camp **9th-12th**
 - July 13-18 \$390
- Canoe Camp **6th-12th**
 - July 11-16 \$280
 - **at Camp Shannondale**

Register at:



<https://mid-americaandmupcamps.godaddysites.com>



Missouri Union
Presbytery

News You Can Use



Missouri Union Presbytery Meeting Summary

our opening prayer and the reading of
GAIA Co-Moderators Rev. CeCe Armstrong



OUT OF CH

How We Work

Disaster Assistance enables congregations and
ers of the Presbyterian Church (U.S.A.) to witness
love of Christ through caring for communities
ected by crises and catastrophic events.

LEARN MORE



SOMA
the synod of mid-america

The Synod of Mid-America is a regional community of six PCUSA presbyteries in Kansas and Missouri.
To find out more about our programs and ministries, explore the links below.

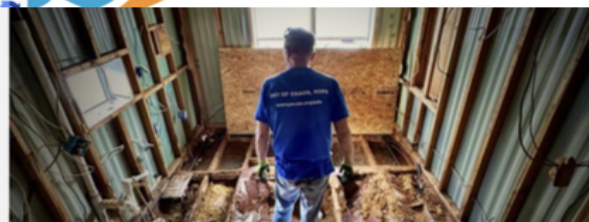
About PC(USA)

/ Home / About PC(USA) / ... / Presbyterian Life & Witness / Ministry Areas / Matthew 25

Matthew 25



MATTHEW 25



Welcome to the Presbyterian Church
(U.S.A.) website!

Find ideas, inspiration, and resources for knowing and sharing the
good news of Jesus Christ.

2025-2026 is the 1700th anniversary of The Nicene Creed. Find
the full text, including "On the third day he rose again in
accordance with the Scriptures," in the "Book of Confessions" 1.2.

Become a
bold witness for peace.

Looking to Keep Up? Check Out These Great Newsletters & Websites!

First Presbyterian Church of Fulton

<https://www.fpcfulton.org/>

Missouri Union Presbytery

<https://bit.ly/4awOqX7>

The Synod of Mid-America

<https://bit.ly/4vrgfbn>

Presbyterian Church (USA)

<https://pcusa.org/>

Presbyterian Disaster Assistance

<https://bit.ly/4eprKKJ>

Earth Care Congregations

<https://bit.ly/3RSOtGr>

Matthew 25 Churches

<https://pcusa.org/matthew25>

Presbyterian Women

<https://www.presbyterianwomen.org>

Presbyterian Peace Fellowship

<https://www.presbypeacefellowship.org/>



WE ARE A MATTHEW 25 CHURCH!

Responding to Need... Through These Waters!

Report human trafficking in a safe, simple, & risk-free way.

Step 1

Download the App

Step 2

Identify the Signs

Step 3

Save Lives

[DOWNLOAD THE APP](#)

Missouri Attorney General Partners with Safe House Project to Launch Anti-Human Trafficking Tool Ahead of World Cup 26™

JEFFERSON CITY, Mo. – Today, Missouri Attorney General Catherine Hanaway announced a partnership with [Safe House Project](#) to launch [Simply Report](#) statewide, giving every Missourian a modernized way to report suspected human trafficking and routing that intelligence directly to law enforcement dashboards accessible across the state.

“Ahead of the 2026 FIFA World Cup, we are unifying our efforts so survivors of human trafficking can be heard, responders can coordinate quickly, and our state can act with urgency and precision to protect the public,” **said Attorney General Catherine Hanaway.** “Protecting victims and preventing exploitation are core public-safety responsibilities of my office, and we will use every tool available to catch traffickers and hold them accountable. Victims deserve systems that work as hard as they do to survive. Statewide access to Simply Report puts victims first, makes reporting safer and easier, and gives Missourians a way to help stop these horrific crimes.”

Simply Report is a free reporting tool and is accessible to every person in Missouri. The reporting platform is available in over 200 languages and is built on an AI-powered behavioral intelligence matrix of more than 700 trafficking indicators. When a Missourian submits a signal, the platform

screens it against the indicator matrix, classifies the level of risk, and routes actionable tips into secure dashboards that law enforcement agencies across Missouri can access in real time. Victims are connected directly to Safe House Project's national Survivor Support Team and certified safe home network for immediate placement and long-term care.

The national trafficking identification rate sits at approximately 1 percent. Human trafficking is an estimated \$99 billion criminal enterprise, and the gap between what is happening and what is being identified is not a public awareness problem. It is an infrastructure problem. Simply Report was built to close that gap, replacing fragmented hotlines and disconnected tip lines with a single streamlined pathway that puts intelligence in the hands of the people who can act on it.

"Missouri is leading, and Missouri is not leading alone. That is the point," **said Kristi Wells, CEO and Co-Founder of Safe House Project.** "Attorneys General across the country have identified the same infrastructure failure and are moving to fix it. What General Hanaway is doing is mobilizing a state and empowering law enforcement to respond to a crime that has long operated in the gaps between systems, and she is doing this ahead of an event that will bring millions of people through Missouri. When a Missourian sees something, they now have a way to act on it. When law enforcement needs intelligence, Simply Report puts it in their hands. This is what modernized identification looks like."

Under a Memorandum of Understanding, the Missouri Attorney General's Office and the Safe House Project will work together to drive statewide awareness of Simply Report, encouraging community members, frontline professionals across healthcare, education, hospitality, and transportation, and law enforcement partners to engage with the platform. Safe House Project will simultaneously bring its national survivor services infrastructure to bear, supporting every victim exiting trafficking across the state through case management, certified safe home placement, and connection to long-term care.

The launch is timed with intent. Large-scale international events historically correlate with increased trafficking activity, and the FIFA World Cup 2026™ will bring an unprecedented flow of visitors through Kansas City region. Missouri's early adoption establishes the reporting and response infrastructure before the surge, not during it.

Missourians are encouraged to download the Simply Report app on the Apple App Store or Google Play Store, visit [simplyreport.com](https://www.simplyreport.com), or call 1.833.5.BESAFE to report suspected trafficking.

About Safe House Project: *Safe House Project is one of the fastest-growing anti-trafficking nonprofits in the United States, building the infrastructure that connects identification, survivor care, prosecution, and prevention. In 2025, Safe House Project served 2,644 survivors and operates a certified network of 4,000+ safe homes and service providers nationwide. Co-founded in 2017 by Kristi Wells and Brittany Dunn. Learn more at [safehouseproject.org](https://www.safehouseproject.org).* May 21, 2026 5:00 pm



There is Still Kiva Money to Invest!

To find out more about how Kiva loans are changing the world, go to: kiva.org. Find out more about how our church is involved in this program from any Mission Committee member.

The Next Baby Grace Open House is June 19th!



Baby Grace



CAPITAL CITY DIAPER BANK



**Baby Grace
Open House
Every 3rd
Friday
2-4 pm**

"I was referred to Baby Grace through my church. Someone told me about it. The ladies are so friendly. I love coming! I'm a single mom and Baby Grace helps me with diapers, clothes, and formula. Even toys!"
-Ashley

**First Presbyterian
Church**

718 Court St Fulton, Missouri





Spring Cleaning

Book Fairy Project

I am collecting gently used children's books to be redistributed to children throughout our community!

Books will be made available to children at FECC as well as organizations such as Baby Grace, WIC and Trends.

Contact your local Book Fairy,
Susan Foglesong at:
susanfoglesong5@gmail.com

For more information on the Book Fairy Pantry Project:
<https://bookfairypantryproject.org/>

SERVE Inc. Food Pantry needs to stock up in anticipation of high needs this summer!



A Call to
Action for the
Little Red
Wagon!

**MISSION COMMITTEE
UPDATE!**

FILLING THE LITTLE RED WAGON

Each Sunday our Young Disciples collect food in the little red wagon for donation to the SERVE, Inc. food pantry. There is a high need at this time for the following items:

- Plastic bags and egg cartons
- Edible seeds such as sunflower

- Nuts, individually packs or small to medium cans.
- High Protein Shelf-Stable Items –Top shelf-stable high-protein items include canned chicken with pull-tabs, tuna/salmon pouches, jerky, nut butters, and lentils. Other excellent options include protein powders, canned beans, soy nuts/edamame, and specialized products like ParmCrisps or protein bars. These provide versatile, nutrient-dense protein sources requiring no refrigeration.

Summer is a season with even greater need since children will be getting out of school. The Food Bank is receiving less food which is also affecting SERVE. ***The Mission Committee is happy to report that in the first quarter monetary donations in the amount of \$1,680 were made. In March, we donated. March food donations - 188.3 pounds***

**Our June Challenge to the Congregation is:
LET'S FILL THE WAGON EACH WEEK!**



Moser's Receipts & Best Choice Labels: Winning Combo for Building Fund!

Your Dedication is Showing!

Saving your Moser's Discount Food receipts and the labels from Best Choice food items has resulted in adding money to our Building Fund.

Please bring the whole receipt tape to church and place them in the collection can located in the lobby

In addition, Best Choice labels are also being collected for the Best Choice Label Project. BUT, to redeem your collections for \$\$, we must have the whole UPC code on the label. Take a look at the samples here for reference.

**Every label or register tape you turn in adds up!
(Please be sure your receipts are no older than one year old
when you submit them for redemption.)**

Thanks for bringing YOURS to church on Sunday!



**WE ARE A MATTHEW 25
CHURCH!**

Creating Community... Through These Waters!



At FPC Summertime Means Picnics & Ice Cream Socials!

OUR CHURCH PICNIC IS THIS SUNDAY:

Join your church family this coming Sunday, June 14th following worship to enjoy good food and visiting. Fried chicken and drinks will be provided. Please bring a dish to share.

CHURCH ICE CREAM SOCIAL IS JULY 12TH!

We will have our annual Ice Cream Social on Sunday, July 12th following worship. You will build your own sandwich and ice cream sundae. Sandwich meat, bread, chips, condiments, ice cream,

syrups, toppings, and drinks will be provided. We will eat outside and all you need to bring is a lawn chair! No need to bring a dish. If you forget your chair...you can bring one of the folding chairs from Fellowship Hall outside to sit on.



Do You Have a Prayer Request to the Congregational Care Committee!

If you have a prayer concern, you have several ways to let us know. You can click on the "Prayer Concerns" tab at the top of our website and the link will email our Congregational Care Chair, after you fill in the information. Arlys Kremer is the chair of

Congregational Care. You can call Arlys or email her (preferred method). There is also a link to the Congregational Care Committee (found under contacts) on our church website.

Arlys Kremer: 573-864-6120 or congregationalcare@fpcfulton.org



YOUR MENTAL HEALTH MATTERS
REACH OUT TO 988

988 SUICIDE & CRISIS
LIFELINE
MISSOURI

Plan Now to Attend These Juneteenth Celebrations!

This year there are two great local events recognizing and celebrating Juneteenth in Fulton.



JUNETEENTH CELEBRATION

Sunday, June 28th

THE GUIDING LIGHT MISSIONARY BAPTIST CHURCH,
1023 WESTMINSTER AVE. FULTON, MO 65251
FELLOWSHIP, FUN AND SHAVE ICE AT 2PM
PROGRAM STARTS AT 3PM

Preliminary Event
Saturday June 27th at 3pm
The Guiding Light Baptist Church
Live screening of the
documentary film
"Juneteenth: Faith and Freedom"
with reflections following



- LIVE ENTERTAINMENT
- INSPIRATIONAL SPEAKERS
- HAWAIIAN SHAVE ICE
- FACE PAINTING
- BALLOON ANIMALS



PRESENTED BY THE JUNETEENTH COMMITTEE, IN PARTNERSHIP WITH THE CITY OF FULTON HUMAN RIGHTS COMMISSION, FULTON CHAPTER OF THE NAACP, AND COMMUNITY PARTNERS



JOIN US ON SATURDAY JUNE 27TH
for an eve of freedom gathering. Don't miss this
opportunity to unite before the main Juneteenth event.

Doors
open
at 3pm

LIVE SCREENING

Juneteenth

FAITH & FREEDOM



The Guiding Light Missionary Church
1023 Westminster Ave

For more info
Call or text Mary at
808-936-7441
or email at
marybee1955@gmail.com

Fulton, Mo.



A Message from the FPC Pollinator Gardens...

Bombus impatiens, the Eastern Bumble Bee, on Purple Poppy Mallow in our church garden.

The Eastern Bumble Bee was once common in the Eastern US. This bee species, and all species of bees, have declining populations due to human activities. Bees are great at pollinating food crops! Our fruits and vegetables require pollination to produce food. Take a close look at the photo and you can see the pollen spread across the flower and on the bee's legs. Our native plant gardens at First Presbyterian Church provide food and shelter for these important bees!

MISSOURI PRIMARY ELECTION

Key voting dates for the August 4, 2026

- JUN 23** **Absentee voting begins**
Application-based absentee voting begins. Last day to request absentee ballot is July 22. Mailed ballots must be received by 7 PM Aug 4.
- JUL 8** **Last day to register to vote**
Registration deadline for the August 4 primary.
- JUL 21** **No-excuse in-person voting begins**
Statewide start date: second Tuesday before Election Day.
- JUL 22** **Last day to request absentee ballot**
Request must be received by 5 p.m. by your local election authority.
- AUG 3** **Last day to vote absentee in person**
In-person absentee voting ends the day before the Election Day.
- AUG 4** **Election Day**
Polls open 6 AM-7 PM. If you are in line at 7 PM, you can vote. Mailed ballots must be in by 7 PM.

ABOUT "EARLY NO-EXCUSE VOTING" IN MISSOURI

Missouri's no-excuse in-person window is statewide: July 21–August 3. Locations, Saturday hours, and daily office hours may vary by county. Check your county clerk/election authority.

Sources: Missouri Secretary of State, Missouri Revised Statutes §115.277, local election authorities

Cargiver Support Group Meets Every Third Thursday!

The Fulton Caregiver Support Group meets monthly on the third Tuesday from 11:00 am until noon at the First Presbyterian Church, 718 Court Street. Caregivers of persons with Alzheimer's disease or other dementias are welcome to share concerns with each other, learn about the disease and support one another. Find comfort and reassurance about feelings of guilt, frustration, and fear. Learn more about Alzheimer's disease and related dementias and make new friends. You are not alone in this journey.

Join us at our next meeting on June 16, 2026

Facilitators are: Rhonda Cundiff 573-826-1050 and Lois Long 573-642-3691

573.476.3107





How can I improve the relationships in all areas of my life?

"Why don't my relationships work?"

"Will I ever find the right person?"

Are you at least 18?

Single?

Live in Missouri?

Have access to Zoom and internet?

If yes, and an evening class works for you, then sign up for our next class & receive tools to help you have healthier relationships!

You deserve healthy relationships!

Classes start on **Tuesday, June 16th** from 7:00 to 9:00 p.m.

For more information or to get signed up: call 1-855-422-4510 - text 573.540.1028 or email smhr@cmca.us

Must attend all 6 weeks of classes & complete a sign up session before classes begin. Zoom & Internet access required



Wearing Your Nametag = Wearing Your Welcome!

Wearing Your Nametag = Wearing Your Welcome!

At **First Presbyterian Church of Fulton**, we believe in creating a space where everyone feels known, seen, and loved. One small way to do that? **Wearing your nametag!**

- It helps visitors feel more at ease.
- It fosters connection and conversation.
- It reminds us we're all part of God's family—by name!

So this Sunday, grab your nametag and help make our church a little warmer, one name at a time. See you at 10:30 a.m.!

#FPCFulton #NameByName #ChurchFamily #Matthew25Church #WelcomeOneAnother #FPCMo



LUNCH BUNCH

Wednesdays at Noon
in the FPC Fellowship Hall!

ALL
are
Welcome!

ALL
are
Welcome!

Bring your own lunch and
enjoy a time of fellowship with friends!

Giving & Contact Information-Pastor's Office Hours!

The Church Office May Be Contacted in the Following Ways...

Street Address: 718 Court St, Fulton, MO, United States, Missouri

USPS Address: PO Box 6037, Fulton, MO, 65251

Telephone: +1 573-642-5541

E-mail: communications@fultonpresbyterian.org

Instagram: [fpc_fulton](https://www.instagram.com/fpc_fulton)

YouTube: <https://www.youtube.com/@FPCFulton>

Website: fpcfulton.org

Rev. Carol Pierson's Regular Office Hours Are:

Monday - Thursday 9:00 am to Noon

Contact Pastor Carol by phone at: 573- 273-8738 (if no answer, please leave call-back information)

Contact Pastor Carol by e-mail at: pastorcarol@fultonpresbyterian.org

Please Join Us for Worship Each Sunday Morning at 10:30 am.

COVID-19 Safety Protocols by the Session of First Presbyterian Church of Fulton.

The wearing of masks when entering the church building is optional. All other COVID-19 Safety Protocols remain in place. This includes the observance of social distance, using disposable Communion elements, and no contact collection of the offering. Our church COVID-19 Safety Protocols extend to all church activities.

How Can I Give?

Checks for pledges and offerings, and documents are normally hand-delivered on Sunday mornings by dropping them in the collection plate located at each door of the Sanctuary. Otherwise, if you are unavailable to attend church, any of these items can be mailed to:

First Presbyterian Church

P.O. Box 6037, Fulton, MO 65251

If you prefer online giving, use our new GIVE+ Online giving system through the website or the GIVE+ Mobile app.

How to Contact Our Committees!

Our committees Gmail accounts that can be used to email them suggestions, concerns, and thanks. The addresses are:

- Session Clerk, Elder Ramona Dobson, "clerk@fpcfulton.org"
- Administration Committee, Elder Graham McCaulley, "administration@fpcfulton.org"
- Christian Education Committee, Elder Mary Van Orden, "communications@fpcfulton.org"
- Mission Committee, Elder Tim Wilkerson, "mission@fpcfulton.org"
- Congregational Care Committee, Elder Arlys Kremer, "pastoralcare@fpcfulton.org"
- Property Committee, Elder Shaun Speers, "property@fpcfulton.org"
- Worship Committee, Elder Shirley Dixon, "worship@fpcfulton.org"
- Communications, Elder Mary Van Orden, "communications@fpcfulton.org"



Welcome to Our Church!

First Presbyterian Church is located at 718 Court Street in historic downtown Fulton, Missouri. Worship services are held each Sunday morning. For more information, go to: www.fpcfulton.org or find us on Facebook or on Twitter @FPCFulton.

Subscribe to our YouTube channel:

[youtube.com/@fpcfulton](https://www.youtube.com/@fpcfulton)

Email: communications@fpcfulton.org

Website: fpcfulton.org

Location: [718 Court Street, Fulton, MO, USA](#)

Phone: [573-642-5541](tel:573-642-5541)

Facebook: <https://www.facebook.com/FPCFulton>

Twitter: [@FPCFulton](https://twitter.com/FPCFulton)



Mary Van Orden

Mary is using Smore to create beautiful newsletters