



## FIRST PRESBYTERIAN OF FULTON, MO

MATTHEW 25 CHURCH

*Established 1875 - 718 Court Street, Fulton, Missouri - [www.fpcfulton.org](http://www.fpcfulton.org) - 573-642-5541*

Digital Newsletter Vol. 7, #17- 5/16/25 through 5/22/25



WE ARE A MATTHEW 25  
CHURCH!

*Building Our Faith.... Through These Waters!*

## Worship & Reflection This Week!

**In-Person Worship At 10:30 am in the Sanctuary!**

**Livestream on YouTube:** <https://www.youtube.com/@fpcfulton>

**Sunday, May 18 2025: The Fifth Sunday in Easter - Year C**

**Liturgical Color:** White

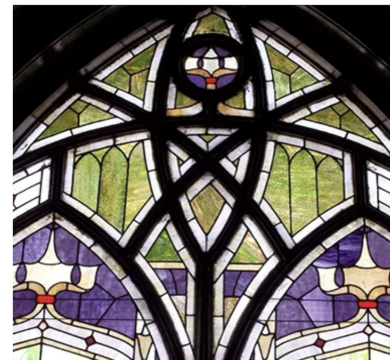
**Usher Captain:** Mark Covey

**Greeter:** Lori Covey

**Acolyte:** Zuri Reifsteck

**Live Stream/Sound:** Shirley Dixon & Graham McCaulley

**Slide Management:** Ramona Dobson  
**Children's Moment:** Angela Russell  
**Worship Leader:** Rev. Ed Hankinson  
**First Scripture Reading:** Psalm 148  
**Second Scripture Reading:** Revelation 21: 1-5  
**Sermon by Rev. Ed Hankinson:** Heavenly Relationships



### **From the Hymnal This Week**

#17 Sing Praise to God

#517 Here, O Lord, We See You

#375 Shall We Gather by the River

#676 Day is Done

### ***Additional Scripture Readings for Sunday, May 18, 2025 -The Fifth Sunday of Easter - Year C***

- First Reading -Acts 11:1-18
- Psalm -Psalm 148:1-14
- Second Reading -Revelation 21:1-6
- Gospel - John 13:31-35

---

## **Christian Education Opportunities Available for Everyone!**



### **Adult Sunday School!**

**In-Person Adult Sunday School Each Sunday Morning  
at 9:30 am in the FPC Library!**

As we enter the season of Lent, let's gather with friends to learn more about this important time in the life of the faithful.

### **Children's Sunday School!**

#### ***Children's Sunday School!***

Our Young Disciples are an important part of our regular gatherings, serving as Acolytes and conducting the Fishes & Loaves Food Collection as they come to the front for the Children's Moment each week.

Infants and any school-age children who wish to remain in the Sanctuary for the remainder of the service are welcome to do so. They may sit with their parents, friends, or take advantage of the children's area of the Narthex.

Parents, please encourage your kids to join our Children's Ed Leaders each Sunday after the Children's Moment for a short Sunday School class. Parents may pick them up after the Worship Service in those locations.



### **The Rock - A Christian Education Experience for Middle & High School Students!**

The Rock is on summer hiatus at this time.



Be watching for a few really fun events sprinkled throughout the summer months. We will finalize those dates as soon as possible and let you know via email and our social media pages.

We've had a FANTASTIC year! As always, [let us know](#) if you have any questions!

The Rock Team

---

## Join Us In Praying for Each Other Each Sunday...

There are slips of paper and pens/pencils available in the lobby for prayer concerns, celebrations, requests, etc. Please write out your request and hand it to the children as they collect food on their way to Children's Moment. A time of prayer and reflection will immediately follow each Sunday morning Worship Service.

---



## A Prayer For Our Presbtery...

*Lord of all life, who is like a father to all creation and mother to all your beloved children,*

*We are your Easter people. Our hearts are open like the tomb and our eyes are filled with the light of your resurrection. As we walked with you through the darkness and drama of Holy Week, we remembered the Last Supper, your prayers, and your determination to complete the journey. Oh, how we celebrated on Sunday at your resurrection! Allow us to be more like you. Lay out before us opportunities to exercise your courage and determination to do your work. Grant us the strength, hope and joy we will need to continue to tell the good news to all. Grant us spirit-filled elders and bring forth from within our presbytery and without, prophetic pastoral leaders to support the congregations of Missouri Union Presbytery. Help us to take care of those you spent the most time with - the poor, hungry, widowed, marginalized and those seeking new homes in new lands. We are following you as closely as possible.*



*Draw us closer in your love.*

*Amen.*

---



## WE ARE A MATTHEW 25 CHURCH!

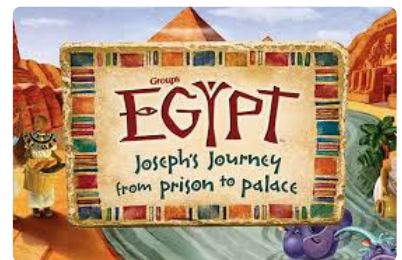
*Responding to Need... Through These Waters!*

### Calling All Volunteers for Vacation Bible School!

Vacation Bible School will take place this year **June 22 – 26** so all previous participating churches (FPC, Christian Church & St. Peters) are able to join in for another year of a Community VBS. First Presbyterian Church will be hosting again so watch the church newsletter for various things you can contribute and help us

prepare for our five-night journey into Egypt where Joseph is in prison but soon gets moved into the palace and into a position of leadership.

Children will get to visit with Joseph, his prison guard, the Pharaoh and others as well as enjoy creating things in several marketplace shops. There will be games from the time to be learned and enjoyed. Those interested in being a volunteer are asked to contact Christian Education Chair Angela Grogan by email at: [Angela.Grogan@westminster-mo.edu](mailto:Angela.Grogan@westminster-mo.edu)



Egypt Teaser - Holy Land Adventure VBS 2025 - Vacation Bible School | Group





## VBS at First Presbyterian Church - June 22-26, 2025! Registration is Open!

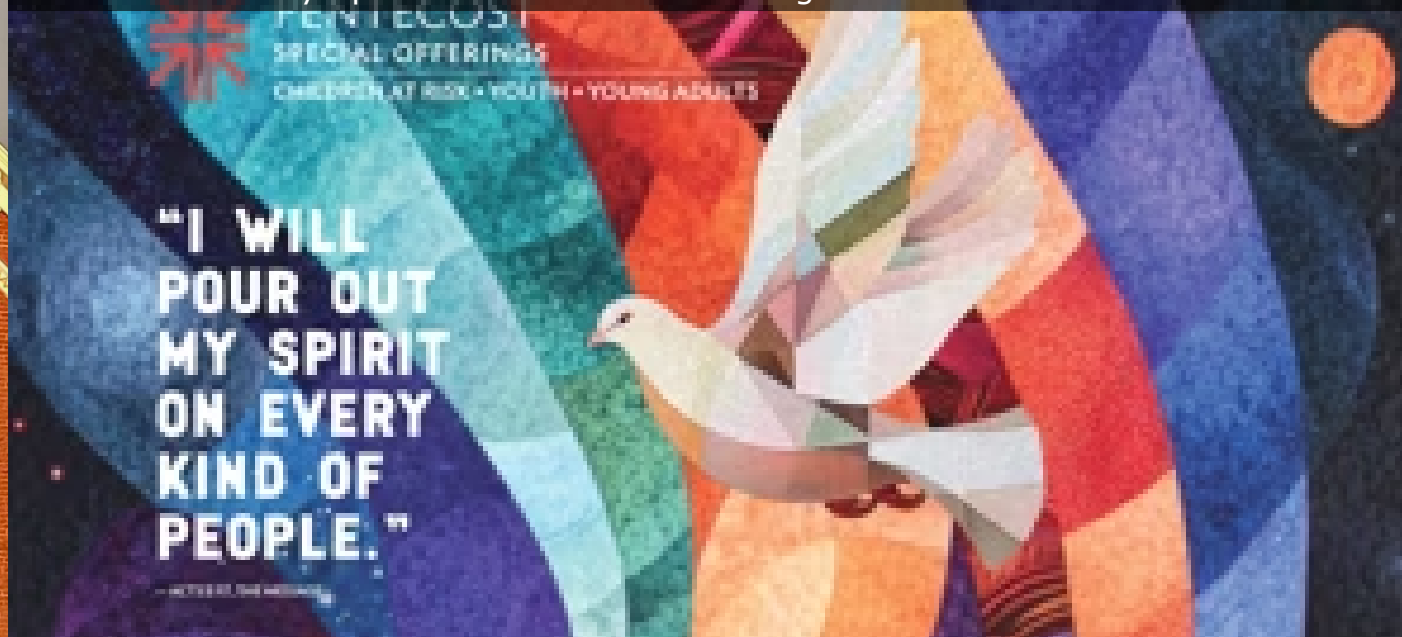
Welcome to your 2025 Holy Land Adventure VBS—where the Bible comes to life right before your eyes! At Egypt, everyone gets to explore first-hand the culture of Joseph's world. Alongside Joseph, they'll experience the heartbreaking trials, joyous victories, and tear-filled celebrations of this unique Bible hero. God's Word comes alive as families enjoy traditional Bible-times customs, occupations, food, and even games!

To register your child, just click here:

<https://bit.ly/44H4MKN>

---

### I Will Pour out My Spirit 2025 Pentecost Offering Video



## Pentecost Offering Collections Through June 8th!

### The Pentecost Offering Nurtures Young People

#### Young adults begin with a strong start — a solid foundation

Twenty-five percent of the Offering goes to support the Young Adult Volunteer (YAV) program, a faith-based year of service in service since 1994, where young adults can engage in experiences that will grow them spiritually. These young adults have an opportunity to address root causes of poverty and reconciliation in an intentional community.

Want to learn more about YAV? Check out [Young Adult Volunteers | Presbyterian Church \(U.S.A.\)](#).

#### Youth and children have the opportunity to grow

- Twenty-five percent supports nurturing the faith of our youth through events like the [Presbyterian Youth Triennium](#).
- Ten percent of your gifts to Pentecost support education for at-risk children through the [Educate a Child, Transform the World initiative](#).

#### Forty percent stays with our congregation!

Forty percent of the Pentecost Offering stays with your congregation to support ministries with young people in our own community.

To make a gift to the Pentecost Offering, 2025, place your check in the donation plate

on Sunday morning or mail a check to:

First Presbyterian Church - Pentecost Offering

## **Moser's Receipts & Best Choice Labels: Winning Combo for Building Fund!**



*Save Your Moser's Discount Foods Receipts  
Remove & Save Best Choice Product Labels.*

*These are Two Great Ways to Support our Building Fund!*

The Moser's Discount Food cash register receipt project raises money for use by the building fund. If you have saved Moser's cash register tapes, please bring the whole receipt tape to church and place them in the collection can located in the lobby

In addition, Best Choice labels are also being collected for the Best Choice Label Project. BUT, to redeem your collections for \$\$, we must have the whole UPC code on the label. Take a look at the samples here for reference.

**Every label or register tape you turn in adds up!**

**Thanks for bringing YOURS to church on Sunday!**

---

## **Bring Your SERVE Donations to Church Each Sunday!**

Each Sunday our Young Disciples collect food donations in the little red wagon for donation to the SERVE, Inc. food pantry. This winter there is a particular need for small packaged food items and hygiene products that can be used by area homeless. Overall, there is a need for the following items.



### **An FPC Giving Update from the Mission Committee**

**In February our church donated 182.25 pounds of food to SERVE, Inc.**

**-AND-**

**The updated total collected during our Souper Bowl Campaign is \$1,500!**

**Giving Hint:** Boxes of individually packaged granola, fruit, and protein bars as well as small packs of dried fruit and nuts are a high need among the unhoused population.

---





## WE ARE A MATTHEW 25 CHURCH!

*Creating Community... Through These Waters!*

---

### DUE TO POPULAR DEMAND - CHANGE IN DATE FOR OUR NEXT CHURCH MEAL...TO JUNE 8TH:

We were originally going to have a meal on May 25th because our General Presbyter is preaching that Sunday, so I was hoping to encourage church attendance by offering a meal after worship. However, the "lunch ladies" have asked to move the meal so it doesn't fall on Memorial Day weekend. Therefore, the church meal **has been moved to June 8th**, which will be the first Sunday for Rev. Pierson to preach...that will give people a chance to visit informally with Pastor Carol. I appreciate all of the lunch ladies and men's willingness to help at our meals, so we will honor their request. On June 8th, we will have sandwich meat, bread, and condiments so you can assemble your own sandwich. We will also have salad, chips, and drinks. You do not need to bring anything for the meal.

Thanks,  
Ramona Dobson



### Do You Have a Prayer Request to the Congregational Care Committee!

If you have a prayer concern, you have several ways to let us know. You can click on the "Prayer Concerns" tab at the top of our website and the link will email our Congregational Care Chair, after you fill in the information. Arlys Kremer is the chair of

Congregational Care. You can call Arlys or email her (preferred method). There is also a link to the Congregational Care Committee (found under contacts) on our church website.

**Arlys Kremer: 573-864-6120 or [congregationalcare@fpcfulton.org](mailto:congregationalcare@fpcfulton.org)**





 **Mid-America Disciples of Christ & The Missouri Union Presbytery**   
**2025 Summer Camps**

<b>TRY IT CAMP</b> (prek-2nd grade) June 6-8 \$235 for the adult child pair	<b>ELEMENTARY CAMP</b> (2nd - 3rd grade) July 14-16 \$195 per participant
<b>CYF CAMP</b> (9th-12th grade) July 7-12 \$385 per participant	<b>JUNIOR CAMP</b> (4th- 5th grade) July 14-18 \$345 per participant
<b>CHI RHO CAMP</b> (6th-8th grade) July 28-August 2 \$385 per participant	

All camps go by the COMPLETED 2024-2025 school year.

**Registration opens March 17th!**

# Another Way

Questions about attending summer camp?  
Contact Audra West - [audraw@fpccolumbia.org](mailto:audraw@fpccolumbia.org) or 573-615-6675  
\*All camps held at Camp Jo-Ota in Clarence, MO



**988**  
SUICIDE  
& CRISIS  
LIFELINE  
MISSOURI

# THERE IS HOPE

**Cargiver Support Group Meets Every Third Thursday!**





The Fulton Caregiver Support Group meets monthly on the third Tuesday from 11:00 am until noon at the First Presbyterian Church, 718 Court Street. Caregivers of persons with Alzheimer's disease or other dementias are welcome to share concerns with each other, learn about the disease and support one another. Find comfort and reassurance about feelings of guilt, frustration, and fear. Learn more about Alzheimer's disease and related dementias and make new friends. You are not alone in this journey.

**Join us at our next meeting on Tuesday, May 20, 2025!**

**Facilitators are: Rhonda Cundiff 573-826-1050 and Lois Long 573-642-3691**

**To Download a Printable Copy of an article by Penn Memory Center entitled: Teen/Young Adult and Children's Books About Alzheimer's Disease and Dementia, go to:**

<https://bit.ly/3E4elrS>

## My ALZ Journey App is Live...

**Introducing..... My ALZ Journey App.** This free, easy-to-use mobile app is designed to support newly diagnosed, early-stage individuals with Alzheimer's or another dementia, and their care partners.

Developed in collaboration with our Early Stage Advisors, the app features content designed with their needs in mind and customizes that based on user type, location, and age at diagnosis to ensure the right support at the right time. It provides a personalized experience, offering local resources and information tailored to early stage and to early stage/younger-onset audiences. Download the My ALZ Journey from your app store ([Google Play Store](#) for Android devices and [Apple App Store](#) for iPad and iPhone). Please be sure to tell your family, friends, support groups and anyone who may benefit about it.



## Top Ten Reasons to Wear Your Nametag in Church....

1. **Helps people remember names:** It can be difficult to remember everyone's name, even in small congregations.
2. **Saves embarrassment:** It's embarrassing to call someone by the wrong name, and name tags can help avoid this.
3. **Invites conversation:** Knowing someone's name breaks down barriers to conversation.
4. **Makes fellowship more personal:** Knowing someone's name can make fellowship feel more personal.
5. **Guests feel less conspicuous:** Name tags can make guests feel more welcome and part of the group.
6. **Says "We want to know you":** Asking someone for their name says "We want to know you".
7. **Provides opportunities for service:** A "nametag" ministry can provide opportunities for service.
8. **Creates a warm atmosphere:** Name tags can help create a warm atmosphere.
9. **Lowers anxiety:** Name tags can help lower anxiety.
10. **Enhances discussion and prayer:** Name tags can help enhance discussion and prayer.

**BEST OF ALL ... It saves our pastor's sanity as he learns all our names!**



# LUNCH BUNCH

Wednesdays at Noon  
in the FPC Fellowship Hall!

ALL  
are  
Welcome!

ALL  
are  
Welcome!

Bring your own lunch and  
enjoy a time of fellowship with friends!

---

## Giving & Contact Information-Pastor's Office Hours!

### The Church Office May Be Contacted in the Following Ways...

Street Address: 718 Court St, Fulton, MO, United States, Missouri

USPS Address: PO Box 6037, Fulton, MO, 65251

Telephone: +1 573-642-5541

E-mail: [communications@fultonpresbyterian.org](mailto:communications@fultonpresbyterian.org)

Instagram: [fpc\\_fulton](https://www.instagram.com/fpc_fulton)

YouTube: <https://www.youtube.com/@FPCFulton>

Website: [fpcfulton.org](http://fpcfulton.org)

### COVID-19 Safety Protocols by the Session of First Presbyterian Church of Fulton.

*The wearing of masks when entering the church building is optional. All other COVID-19 Safety Protocols remain in place. This includes the observance of social distance, using disposable Communion elements, and no contact collection of the offering. Our church COVID-19 Safety Protocols extend to all church activities.*

### How Can I Give?

Checks for pledges and offerings, and documents are normally hand-delivered on Sunday mornings by dropping them in the collection plate located at each door of the Sanctuary. Otherwise, if you are unavailable to attend church, any of these items can be mailed to:

**First Presbyterian Church**  
**P.O. Box 6037, Fulton, MO 65251**

**If you prefer online giving, use our new GIVE+ Online giving system through the website or the GIVE+ Mobile app.**

### How to Contact Our Committees!

Our committees Gmail accounts that can be used to email them suggestions, concerns, and thanks. The addresses are:

- Session Clerk, Elder Ramona Dobson, "[clerk@fpcfulton.org](mailto:clerk@fpcfulton.org)"
- Administration Committee, Elder Graham McCaulley, "[administration@fpcfulton.org](mailto:administration@fpcfulton.org)"



- Christian Education Committee, Elder Angela Grogan, "[education@fpcfulton.org](mailto:education@fpcfulton.org)"
- Mission Committee, Elder Tim Wilkerson, "[mission@fpcfulton.org](mailto:mission@fpcfulton.org)"
- Congregational Care Committee, Elder Arlys Kremer, "[pastoralcare@fpcfulton.org](mailto:pastoralcare@fpcfulton.org)"
- Property Committee, Elder Shaun Speers, "[property@fpcfulton.org](mailto:property@fpcfulton.org)"
- Worship Committee, Elder Shirley Dixon, "[worship@fpcfulton.org](mailto:worship@fpcfulton.org)"
- Communications, Elder Mary Van Orden, "[communications@fpcfulton.org](mailto:communications@fpcfulton.org)"



## Welcome to Our Church!

*First Presbyterian Church is located at 718 Court Street in historic downtown Fulton, Missouri. Worship services are held each Sunday morning. For more information, go to: [www.fpcfulton.org](http://www.fpcfulton.org) or find us on Facebook or on Twitter @FPCFulton.*

*Subscribe to our YouTube channel:*

[youtube.com/@fpcfulton](https://www.youtube.com/@fpcfulton)

**Email:** [communications@fpcfulton.org](mailto:communications@fpcfulton.org)

**Website:** [fpcfulton.org](http://fpcfulton.org)

**Location:** [718 Court Street, Fulton, MO, USA](#)

**Phone:** [573-642-5541](tel:573-642-5541)

**Facebook:** <https://www.facebook.com/FPCFulton>

**Twitter:** [@FPCFulton](https://twitter.com/FPCFulton)



**Mary Van Orden**

Mary is using Smore to create beautiful newsletters

